

HTK(Honda Connectors) PCR series cable connectors for Automation & Control

Connector

Cable side female connector
Solder terminal type
P/N: PCR-E20FS+
Applicable back-shell
P/N: PCR-V20L (A, B)



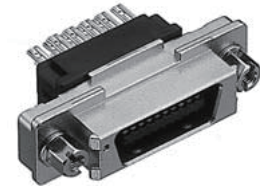
Back-shell for female connector
Spring latch type
P/N: PCR-V20LA (for 6 mm O.D cable)
P/N: PCR-V20LB (for 8 mm O.D cable)
Applicable connector
P/N: PCR-E20FS+ (Solder terminal)

Cable side female connector with
shell GND terminal, Solder terminal type
P/N: PCR-S(20, 28, 36, 50)FS+
Applicable back-shell
P/N: PCR-LS (20, 28, 36, 50) LA



Back-shell for female connector
Spring latch and Screw lock type
P/N: PCR-LS20LA (for 10 mm O.D cable)
P/N: PCR-LS28LA (for 14.5 mm O.D cable)
P/N: PCR-LS36LA (for 15 mm O.D cable)
P/N: PCR-LS50LA (for 16 mm O.D cable)
Applicable connector
P/N: PCR-S(20, 28, 36, 50)FS+ (Solder terminal)

Cable side inline connector
Solder terminal type
P/N: PCR-E(20, 28)PMRS-SL+
Applicable back-shell
P/N: PCR-S(20, 28)PMLA2+S



Back-shell for male inline connector
P/N: PCR-S20PMLA2+S (for 10 mm O.D cable)
P/N: PCR-S28PMLA2+S (for 14 mm O.D cable)
Applicable connector
P/N: PCR-E(20, 28)PMRS-SL+ (Solder terminal)
Mating connector and back-shell
P/N: PCR-S(20, 28)FS+ (Connector)
P/N: PCR-LS(20, 28)FS+ (Back-shell)

Fit

Back-shell

Material

Part name	Material and Finish
Female Contact	Phosphor bronze, selective gold(contact area) over nickel plating
Male Contact	Phosphor bronze, selective gold(contact area) over nickel plating
Insulator	PBT resin, UL 94V-0
Metal shell	Steel, nickel plating
Locking Device	Spring latch; Stainless steel, Screw lock; Steel, nickel plating
Back-shell Body	ABS resin, UL 94V-0

Rev.1.3

Distributor

TOKOH DENKI CO., LTD.

Home Page: <http://www.tokoh.biz/>

E-Mail: office@tokoh.biz

